

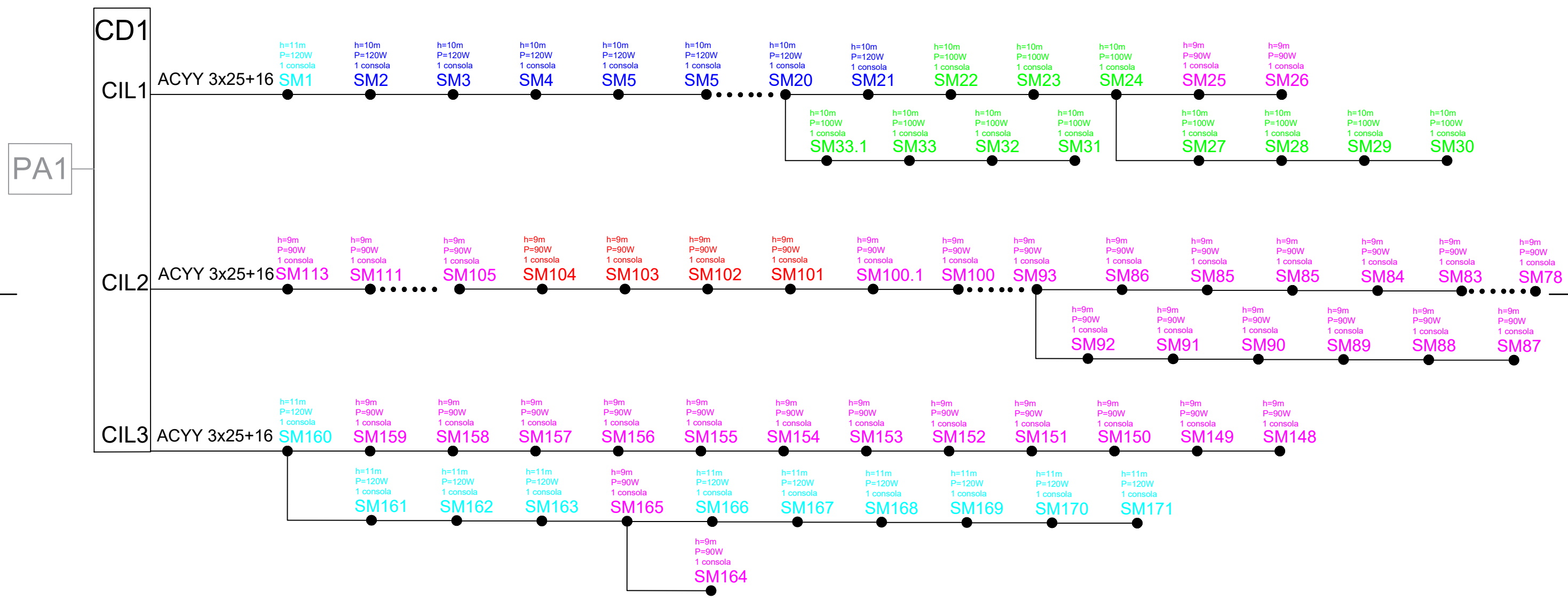
The diagram illustrates a network node labeled "Nod rutier DN69". It features a 4x12 grid of server racks. The racks are labeled CIL1, CIL2, CIL3, and CIL4. Each rack contains 12 server units, each with a label like SM55, SM54, etc. The units are connected to a central switch "PA1" and a power supply "PT". The diagram also shows a "CD1" label at the bottom.

Rack	Unit 1	Unit 2	Unit 3	Unit 4	Unit 5	Unit 6	Unit 7	Unit 8	Unit 9	Unit 10	Unit 11	Unit 12
CIL1	ACYY 3x25+16	SM55	SM54	SM53	SM52	SM51	SM50	SM49	SM48	SM47	SM46	SM34
CIL2	ACYY 3x25+16	SM56	SM57	SM58	SM59	SM60	SM61	SM62	SM63	SM64	SM65	SM77
CIL3	ACYY 3x25+16	SM114	SM115	SM116	SM117	SM118	SM119	SM120	SM121	SM122	SM124	SM133
CIL4	ACYY 3x25+16	SM134	SM135	SM136	SM137	SM138	SM139	SM140	SM141	SM142	SM143	SM147

Each server unit is labeled with "h=10m", "P=120W", and "1 consola".

1	2	3	4	5	6	7	8
---	---	---	---	---	---	---	---

Nod rutier DN69



<div><div></div><div>COMPANIA NATIONALA DE ADMINISTRAREA INFRASTRUCTURII RUTIERE S.A. (C.N.A.I.R. S.A.)</div></div>	<div><div></div><div>TODINI COSTRUZIONI GENERALI S.p.A.</div></div>	TITLU PROIECT		SPECIFICATIE	NUME	SEMNATURA	DATA	TITLU PLANSA:		Revizie				
		PROIECTARE SI EXECUTIE „DRUM DE LEGĂTURĂ AUTOSTRADA A1 ARAD - TIMIȘOARA - DN 69"		DESENAT	Ing		Aug 2021	LUCRARI DE ILUMINAT RUTIER		NR.	DATA	DESCRIERE		
		FAZA PROIECT		CONTRACT NR.		PROIECTAT	Ing	MĂRIMEA A3	SCARĂ	NUMAR PLANSA:	PICHET	0	08.2021	Emitere P.T.E.
				92/7703/01.02.2021		SEF PROIECT	Ing							
				PROIECT NR.		VERIFICAT	Ing							
				08/2021										
P.T.E.														

# Nod rutier DC58

PT

PA2

CIL1

ACYY 3x25+16 SM172 SM173 SM174 SM175 SM176 SM177 SM178 SM179 SM180 SM181 SM181 SM198

CIL2

ACYY 3x25+16 SM226 SM225 SM224 SM223 SM222 SM221 SM220 SM219 SM218 SM217 SM217 SM199

CIL3

ACYY 3x25+16 SM227 SM228 SM229 SM230 SM231 SM232 SM234 SM235 SM236 SM237 SM237 SM250 SM250.1 SM250.2

CIL4

ACYY 3x25+16 SM274 SM273 SM272 SM271 SM270 SM269 SM268 SM257 SM267 SM266 SM266 SM251 SM251.1 SM251.2

CIL5

ACYY 3x35+16 SM275 SM276 SM277 SM278 SM279 SM280 SM281 SM282 SM283 SM284 SM285 SM286 SM286 SM290

SM312 SM305 SM304 SM303 SM302 SM301 SM300 SM299 SM297.1 SM297 SM296.1 SM296

SM291.1 SM291 SM295 SM292 SM293 SM294

CIL6

ACYY 3x35+16 SM313 SM314 SM315 SM316 SM321 SM322 SM323 SM324 SM325 SM326 SM333 SM333.1 SM334 SM335 SM336

SM339 SM337 SM337.1 SM337.1 SM338.1 SM340 SM341 SM353 SM327 SM328 SM332

BENEFICIAR:



COMPANIA NATIONALA DE  
ADMINISTRAREA  
INFRASTRUCTURII RUTIERE  
S.A. (C.N.A.I.R. S.A.)

ANTREPRENOR:



TODINI COSTRUZIONI  
GENERALI S.p.A.

TITLU PROIECT

PROIECTARE SI EXECUTIE „DRUM DE LEGATURA  
AUTOSTRADA A1 ARAD - TIMISOARA - DN 69”

FAZA PROIECT

P.T.E.

CONTRACT NR.

92/7703/01.02.2021

PROIECT NR.

08/2021

SPECIFICATIE

DESENAT Ing.

PROIECTAT Ing.

SEF PROIECT Ing.

VERIFICAT Ing.

NUME

SEMNATURA

DATA

Aug 2021

MĂRIMEA

A3

SCARĂ

TITLU PLANSA:

LUCRARI DE ILUMINAT RUTIER

NUMAR PLANSA:

SD-003

PICHET

-

Revizie

NR.	DATA	DESCRIERE
0	08.2021	Emitere P.T.E.

PAGE 3 / 5

Nod rutier A1

PA3

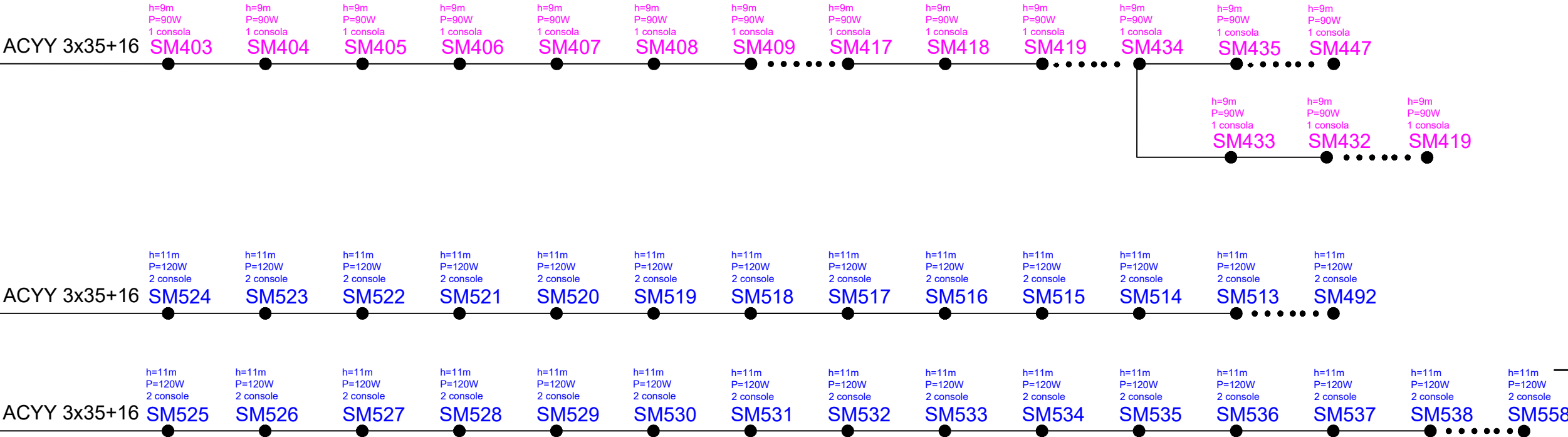
CIL1

CIL2

CIL3

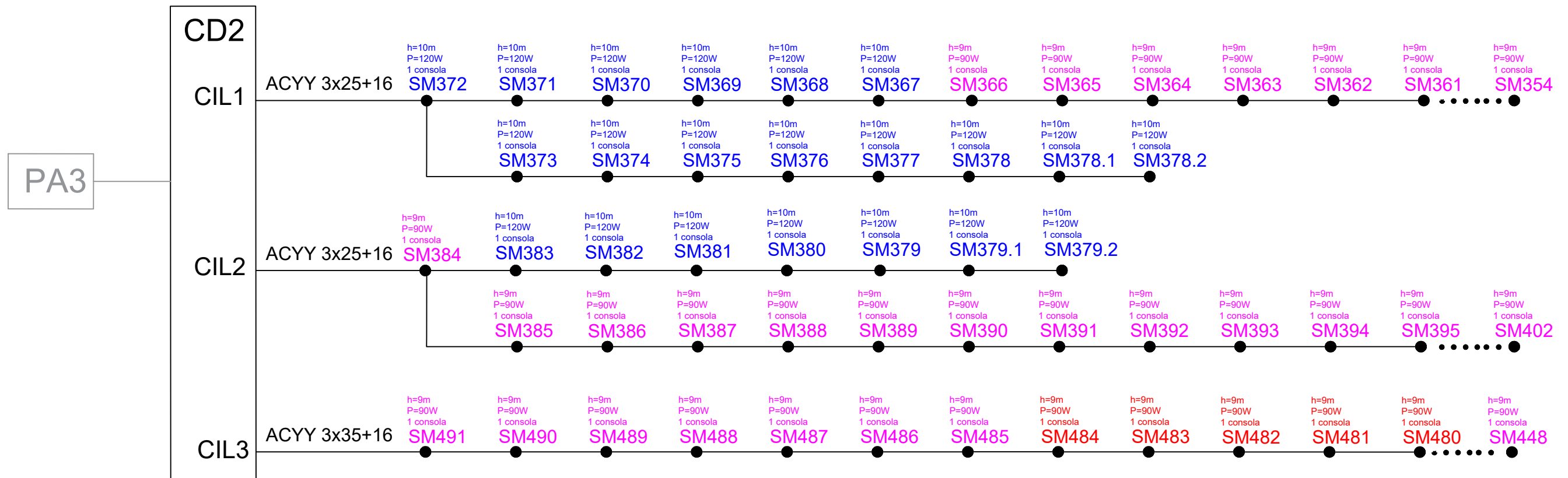
PT




CD2



<div>BENEFICIAR:</div> <div></div>	<div>ANTREPRENOR:</div> <div></div>	TITLU PROIECT		SPECIFICATIE	NUME	SEMNATURA	DATA	TITLU PLANSA:		Revizie		
		PROIECTARE SI EXECUTIE „DRUM DE LEGĂTURĂ AUTOSTRADA A1 ARĂD - TIMIȘOARA - DN 69”		DESENAT	In		Aug 2021	LUCRARI DE ILUMINAT RUTIER		NR.	DATA	DESCRIERE
				PROIECTAT	In					0	08.2021	Emitere P.T.E.
				SEF PROIECT	In							
				VERIFICAT	Inç							
FAZA PROIECT		CONTRACT NR. 92/7703/01.02.2021		SCARĂ		NUMAR PLANSA:	PICHET	PAGE				
P.T.E.		PROIECT NR. 08/2021				SD-004	-	4 / 5				

# Nod rutier A1



<div><div>COMPANIA NATIONALA DE ADMINISTRAREA INFRASTRUCTURII RUTIERE S.A. (C.N.A.I.R. S.A.)</div></div>	<div><div>TODINI COSTRUZIONI GENERALI S.p.A.</div></div>	TITLU PROIECT		SPECIFICATIE	NUME	SEMNATURA	DATA	TITLU PLANSA:		Revizie			
		PROIECTARE SI EXECUTIE „DRUM DE LEGĂTURĂ AUTOSTRADA A1 ARAD - TIMIȘOARA - DN 69"		DESENAT				Aug 2021	LUCRARI DE ILUMINAT RUTIER		NR.	DATA	DESCRIERE
		FAZA PROIECT	CONTRACT NR. 92/7703/01.02.2021	PROIECTAT				0			08.2021	Emitere P.T.E.	
				SEF PROIECT									
				P.T.E.				PROIECT NR. 08/2021			VERIFICAT		
NUMAR PLANSA:					PICHET		PAGE 5 / 5						
							SD-005	-					